

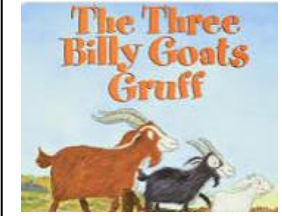
### Literacy

Little Wandle -Phase 2  
Show interest in books and handle them carefully  
Recognise own name  
Make marks with meaning  
Write some or all of their name

### Communication and Language

Responding to 2 part instructions  
Extending vocabulary using Word Aware  
Joining in with in story times and circle times  
Continuing with 'Good Listening' games developing listening skills

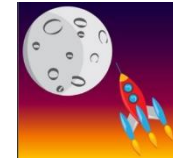
### Traditional Tale



### Vocabulary

Ice, Snow, frozen, cold, polar bear, penguin, star, sun, Polar, temperature, explorer, arctic Antarctic, solar system, galaxy, astronaut, planet  
Melt, freeze, solid, liquid, melting,

## Zoom To The Moon



### Maths

- Introduction to the number zero.
- Finding number 0-5 on a number line.
- Subitising numbers 0-5
- Representing numbers 0-5 in different ways.
- Finding 1 more.
- Finding 1 less.
- Composition of numbers to 5
- Conceptual subitising of the number 5.

### Expressive Arts and Design

Music-Charanga-Our Stories  
DT-Kapow-Textiles Bookmarks  
Rocket Models  
Christmas cards, calendars and decorations  
Linking colours to festivals

### Physical Development

**Confidently and safely use a range of large and small apparatus indoors and outdoors, alone and in a group**  
**Show preference for dominant hand**  
**Give meaning to marks they draw and write**

PE focus- Manipulation Coordination

Outdoor Provision- Ball skills-throwing, catching  
Climbing apparatus  
Bikes and Scooters

### Personal, Social and Emotional Development.

Valuing each others contributions  
Continuing to build positive relationships with peers

#### Jigsaw- Dream and Goals

- Challenge
- Never Giving Up
- Setting a Goal
- Obstacles and Support
- Flight to the Future
- Award Ceremony

### Understanding the World

**History Focus:** Where do I live? Where have visited in the past?  
What did Neil Armstrong and Mae Jemison do?  
Why are they important?  
**Geography Focus :** Discuss where we live.  
What animals that live in cold places?  
What are some differences between cold and hot environments.  
**Science Focus:** Name some planets and some features of planets.  
What does an astronaut do?  
Use scientific vocabulary to describe states of matter (ice/water/melting/freezing/solid/liquid).  
**RE Focus –**  
Where is special to me?  
Where is a special place Muslims go?  
What makes a mosque special?  
What is important in a mosque?